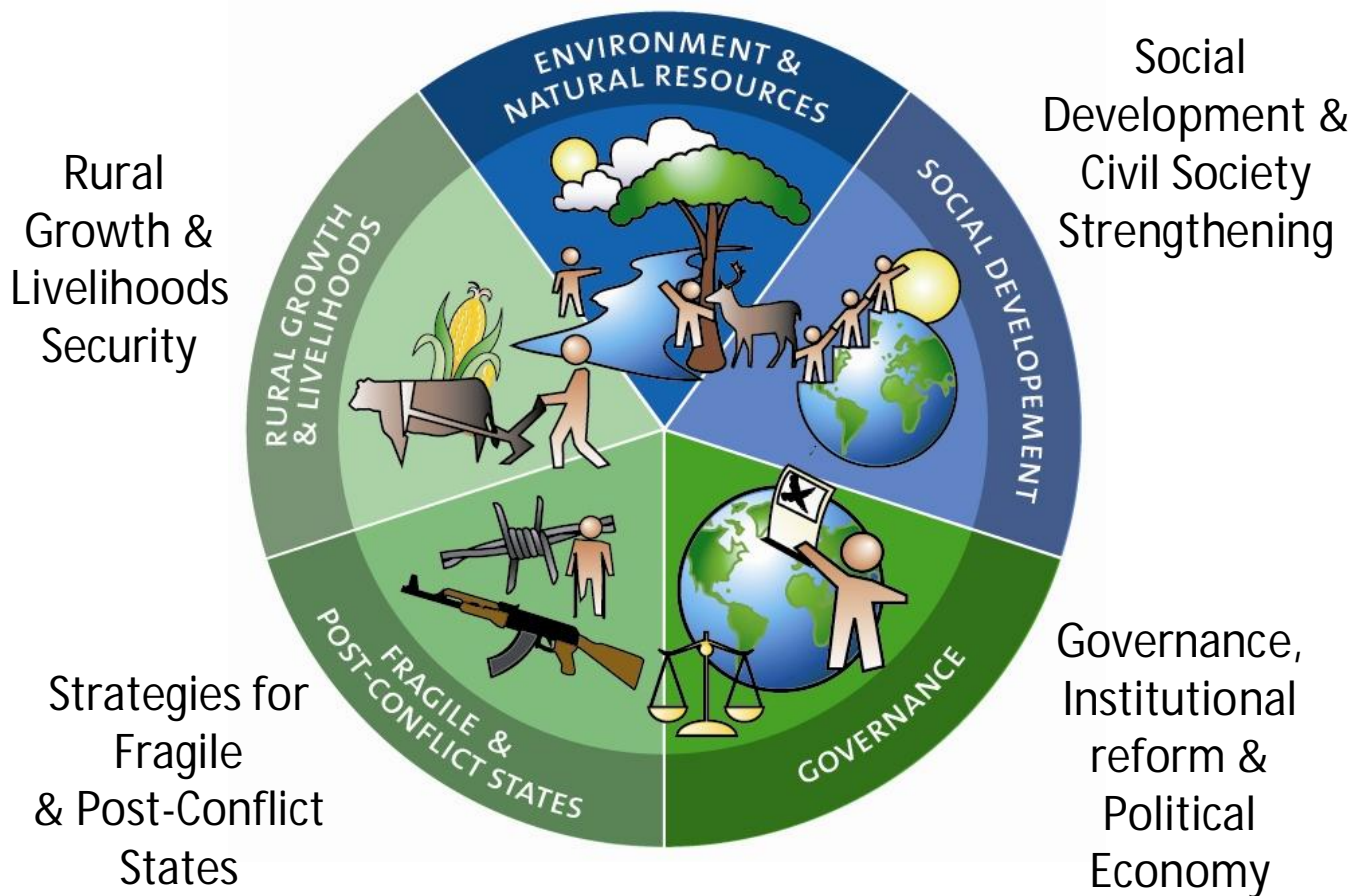


## Environment & Natural Resource Management



### *theIDLgroup*

*theIDLgroup* is private sector development organisation committed to delivering professionalism and fresh perspectives to the challenge of eradicating global poverty.

We are based in Bristol, England, and provide international development consultancy services in Africa, Asia, Eastern Europe, the Americas and the Pacific. In 2007, *theIDLgroup* integrated with FRR, which specialises in natural resource management, forestry, biodiversity conservation and protected area management. Both firms have a 20 year history of service to clients worldwide.

Together, *theIDLgroup* and FRR provide advisory services in five interconnected areas:

- Rural growth and livelihood security
- Natural resource management and the environment
- Governance, institutional reform and political economy
- Social development, and civil society strengthening
- Development strategies in fragile and post-conflict states

*theIDLgroup* has offices in West Africa, East Africa and East Asia.

## Our Services and Portfolios

Our services fall into five main portfolios. Much of our work is inter-disciplinary, and typical projects will draw on the skills of consultants from two or three portfolios.



### Clients

Bilateral Donors: (AFD, Dutch, SIDA, CIDA, DFID, USAID, GTZ/BMZ, KfW)

IFIs: (World Bank, ADB, AfDB, EBRD)

UN Agencies: (FAO, UNDP, IFAD, UNICEF)

NGOs: (WWF, IUCN, Oxfam, ActionAid)

Private Clients: (Shell, Geneva Univ)



**RURAL GROWTH AND LIVELIHOODS SECURITY.** We provide policy advice on strategies to enable robust rural economic growth, and livelihood security for the rural poor. Particular areas of expertise are strategic planning of agricultural research, and the design of food security programmes. For more information on our services, contact [steve.ashley@theIDLgroup.com](mailto:steve.ashley@theIDLgroup.com)



**ENVIRONMENT AND NATURAL RESOURCE MANAGEMENT.** We undertake strategic environmental assessments, programme design, and impact monitoring. Our policy work focuses on payments for environmental services and innovative financing mechanisms. The portfolio includes **FORESTRY, BIODIVERSITY CONSERVATION AND PROTECTED AREA MANAGEMENT.** We have a strong track record in resource governance, and the control of illegal trade in timber and wildlife. Contact Clare Brogan on [clare.brogan@theIDLgroup.com](mailto:clare.brogan@theIDLgroup.com)



**GOVERNANCE.** We work with governments and aid agencies to review opportunities for improved governance, transparency and democracy. We take an institutional economics perspective to **INSTITUTIONAL DEVELOPMENT**, and assist public sector organisations to develop new mechanisms for strengthened accountability and reform. Contact Taylor Brown: [taylor.brown@theIDLgroup.com](mailto:taylor.brown@theIDLgroup.com)



**SOCIAL DEVELOPMENT.** Our services include poverty, vulnerability, gender and social impact analyses, and programme design. We have a particular interest in **CIVIL SOCIETY STRENGTHENING**, in support of plural, diverse civil society. Contact Sam Gibson: [sam.gibson@theIDLgroup.com](mailto:sam.gibson@theIDLgroup.com)



**STRATEGIES FOR FRAGILE AND POST-CONFLICT STATES.** We use social analysis tools to analyse the underlying causes of conflict, and determine how to apply community-driven development approaches to local initiatives, in complex situations. Contact Phil Cowling: [phil.cowling@theIDLgroup.com](mailto:phil.cowling@theIDLgroup.com)



### SERVICES TO AID AGENCIES

Our services to aid agencies and NGOs include:

- Policy reviews and thought-pieces
- Programme and project design
- Monitoring, reviews and evaluations
- Strategic planning and prioritisation
- Facilitation of workshops, retreats and events
- Professional staff training and mentoring
- Interim advisors and programme managers
- Programme management support
- Management of consultation processes

### FRR – a Division of *theIDLgroup*



FRR was established in 1987 as Fountain Renewable Resources Ltd.

FRR has 20 years experience in the design, management, monitoring and review of programmes, projects, grants and fund facilities. Areas of focus are forestry, biodiversity conservation, land reform, extractive industries, natural resource management and environmental governance. FRR has supported governments worldwide with complex change initiatives in these sectors, involving legislative, financial, organisational, corporate governance and regulatory reform.